

Princess Trail & Lookout

The Princess Trail & Lookout honors Princess Abigail Kinoiki Kekaulike Kawānanakoa (born April 26, 1926), a descendant of Hawaiian royalty and heiress to the estate of her great-grandfather, James Campbell. Princess Kawānanakoa's generous donation to the Waianae Coast Comprehensive Health Center was used to construct its Native Hawaiian Traditional Healing Center.

The Princess Lookout (Ke Ali'i Kinoiki Kahua) represents a vantage point from which the Princess can watch over the Native Hawaiian Traditional Healing Center's services, practices, and cultural events. The symbolism of the artwork in the design of the Princess Lookout is detailed below.



*Princess
Abigail Kinoiki Kekaulike
Kawānanakoa*



Mahalo to Kauila Clark, chief designer and architect for the Lookout and Sooriya Kumar, who created the copper artwork.



The seven colored stripes on the two front poles represent the Hawaiian Islands joined by the ocean (blue/green lines) that unites us all together as one Nation. The colors on the poles represent the islands as follows: Red - Hawaii (Lehua), gray/orange – Kaho'olawe (Kauna'oa), gray - Lāna'i (hina-hina), pink - Maui (Iokelani), green - Moloka'i (kukui), yellow/orange - O'ahu ('ilima), purple - Kaua'i (mokihana), white Ni'ihau (Ni'ihau shells).



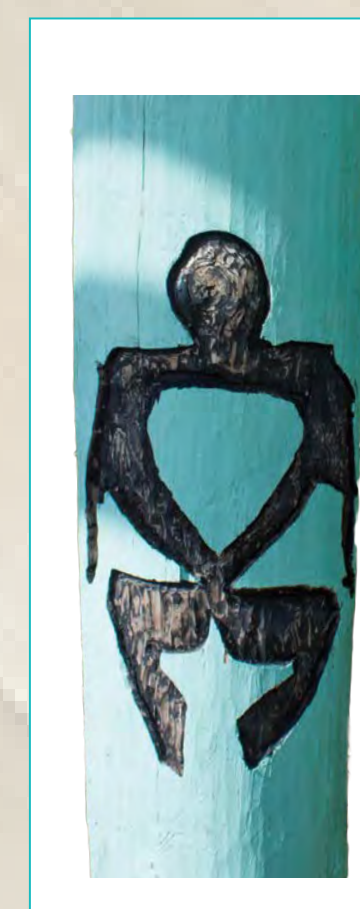
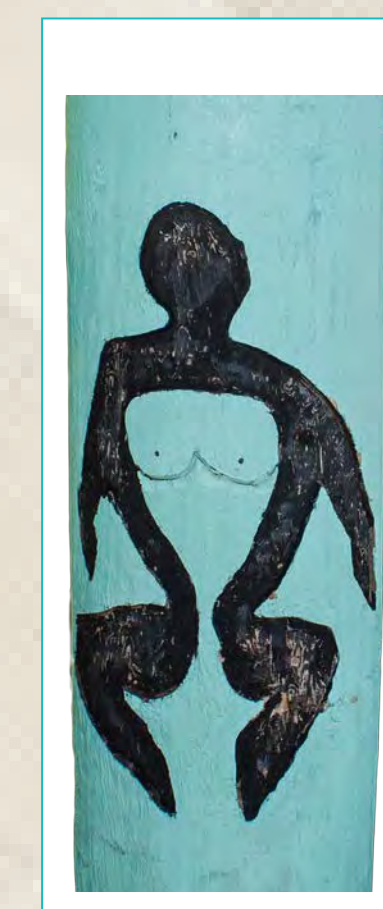
The copper bands on the center Royal Medicine Pole signify the lau kī (ti leaves) representing spiritual guidance, the royal crown and the Princess insignia. Clean air and water (the blue/green color) along with the sacred kalo (taro) represent the three basic medicines of traditional healing. The symbols together show that the monarchy ruled over the land, water, and air and that the ali'i (royalty) were blessed and guided by the Creator.



Kähili are feathered standards used since ancient times by Hawaiian royalty. The red and yellow-orange colors represent the Princess' royal lineage.



The manō (shark) is her family's 'aumakua (spiritual guardian). The glass eyes represent clarity as the shark leads the people to Hawai'i.



The male figure facing west and the female figure facing east represent a female asserting her rule over males and females of all the Islands.



The pewa symbol (butterfly patches) signify healing, as they are used to bind together a cracked 'umeke (gourd) or wa'a (canoe). The pewa was adopted as the logo for the Native Hawaiian Traditional Healing Center.